



Unit 2, 36 Liverpool St
Ingleburn NSW 2565
T: 1300 459 327
www.outbackclotheslines.com.au

INSTALLATION INSTRUCTIONS

URBAN SERIES GROUND MOUNT KIT



Contents

Leg
2 off

Joiner **
1 off

Spreader Bar**
2 off

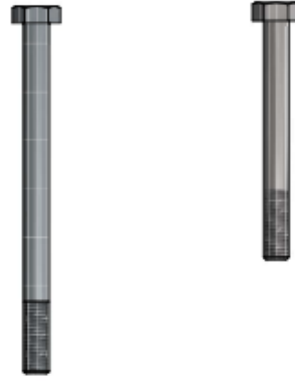
Bolt
M8 x 110
2 off

Bolt
M8 x 90
2 off

Lock Nut
M8
4 off



Tek Screw must only be removed if the length needs to be adjusted



****Clotheslines 2400mm or less use a 1 piece spreader bar.**
Spreader bar assembly consists of 2 Spreader Bars and 1 Joiner

Layout:

- Dig 2 holes, 200mm diameter, for the posts. The hole centres are 160mm less than the length of the clothesline purchased (e.g. 2240mm for a 2400mm clothesline, or 2840mm for a 3000mm clothesline).
- The hole depth depends on the desired height of the clothesline. Ensure that the holes are deep enough that the spreader bar is level with the users head.

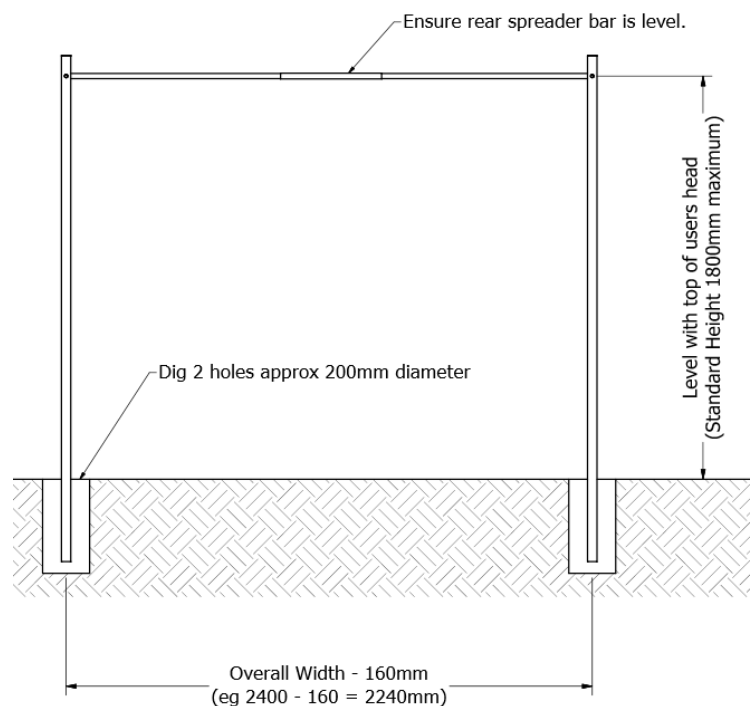


Figure 1 – Layout.

Assembly:

- Assemble the rear spreader bar (clotheslines larger than 2400mm).
- Bolt the one side of the clothesline to the legs as shown in Figure 2.
- Install the front spreader bar as per wall mount instructions.
- Bolt remaining clothesline to the opposite leg.
- Set the poles in the ground with concrete.
Ensure the posts and spreader bar are level
- Leave concrete to set as per manufacturer's instructions before assembling or using the clothesline.
- Refer to the Wall Mount Instructions for details on the cord installation.

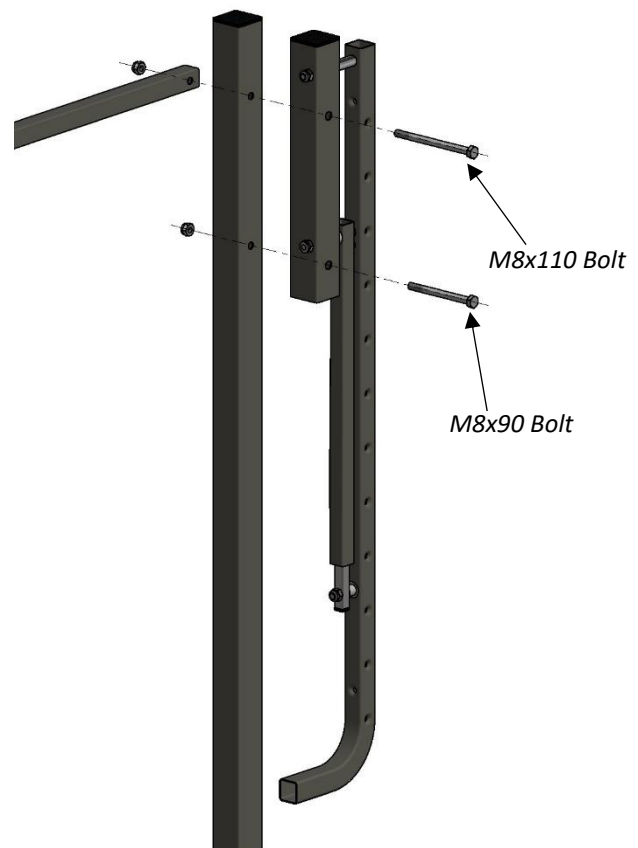


Figure 2 – Assembly.

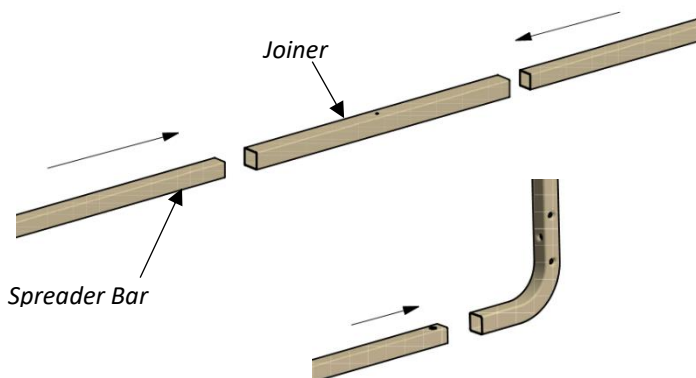


Figure 5 – Spreader Bar assembly

Figure 2 – Assembly.